



## 40-45Watt Polycrystalline Solar Module

**Features**  
High power output module conversion efficiency with stable cell production technology.

Anti-reflective and anti-soiling surface reduces power loss from dirt and dust.

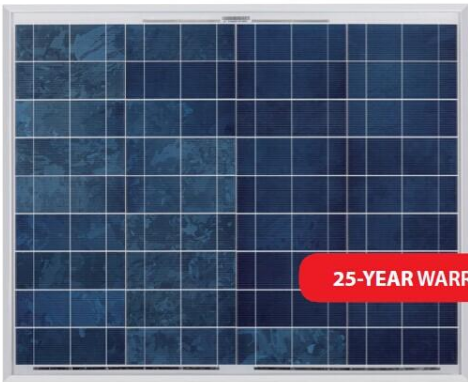
Outstanding performance in low-light irradiance environments.

Certified to withstand: wind load and snow load.

High salt mist and ammonia resistance certified by TUV Rheinland.

**Quality and Safety**  
Designed according to and complying with all requirements in IEC 61730 , IEC 61215, UL1703, CEC Listed, MCS and CE.

ISO 9001:2008:Quality management systems.  
ISO 14001:2004:Environmental management systems.  
BS OHSAS 18001:2007:Occupational health and safety management systems.

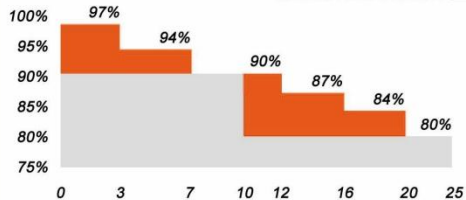


25-YEAR WARRANTY

### Warranties

Product guarantee: 5 years

ORI Solar Performance Guarantee  
Standard Tiered Guarantee



### Electrical Characteristics

Model	ORI-40D-12/REA	ORI-45D-12/REA
Optimum Operating Voltage (Vmp)	17.4V	17.6V
Optimum Operating Current (Imp)	2.30A	2.56A
Open-Circuit Voltage (Voc)	21.8V	22.0V
Short-Circuit Current (Isc)	2.58A	2.79A
Maximum Power at STC (Pmax)	40Wp	45Wp
Nominal Voltage	12V	
Operating Temperature	-40°C to +85°C	
Maximum System Voltage	1000V(IEC)/600V(UL)	
Maximum Series Fuse Rating	10A	
Power Tolerance	±5%	

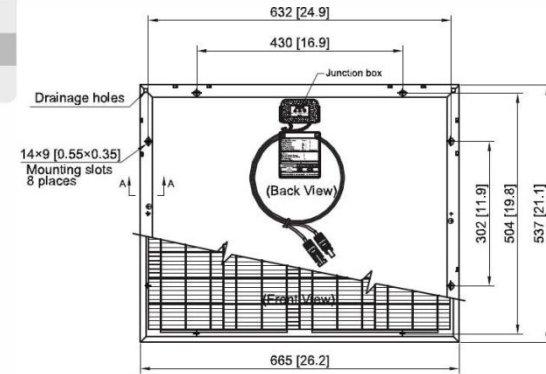
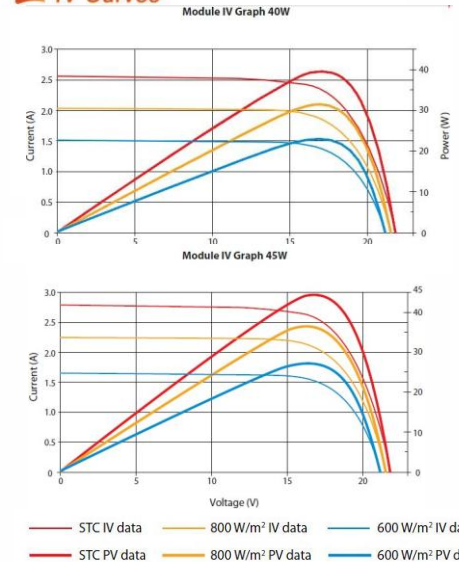
### General Characteristics

Solar Cell	Polycrystalline
Number of Cells	36 (4x9)
Dimension	537×665×30mm (21.1×26.2×1.2 inches)
Weight	4.5 Kgs (9.9 lbs)
Front Glass	3.2mm tempered glass
Frame	Anodized aluminum alloy
Mechanical load	5400 pa
Classification	Application class A; IP65

### Temperature Coefficients

NOCT (°C)	45±2
Temperature Coefficient of Pmax (%/°C)	-0.47
Temperature Coefficient of Voc (%/°C)	-0.34
Temperature Coefficient of Isc (%/°C)	0.045

### IV Curves



### Section A-A

